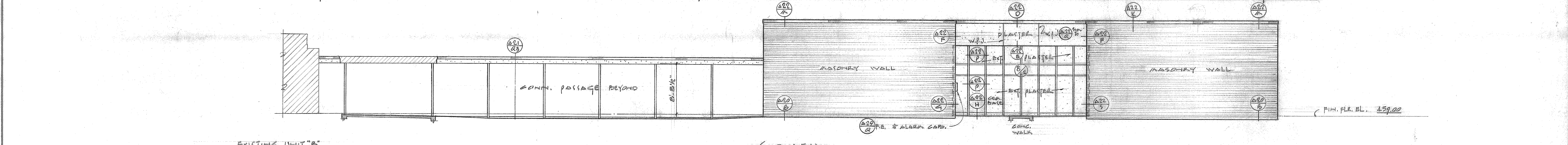
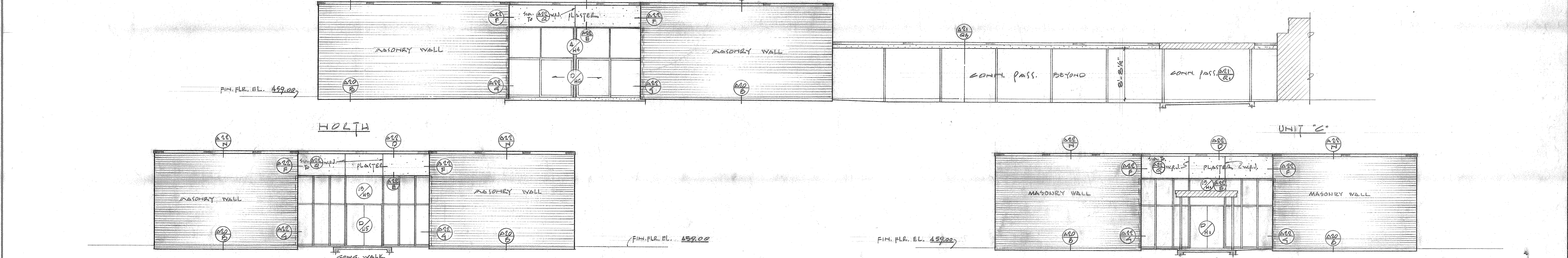


EXTERIOR ELEVATIONS - CLASSROOM UNIT "F"



EXTERIOR ELEVATIONS - LIBRARY UNIT "H"



EXTERIOR ELEVATIONS - LIBRARY UNIT "H"

STATE FIRE MARSHAL
STATE OF CALIFORNIA
APPROVED *[Signature]*
DATE 1-30-62

[Signature]
ARCHITECT
[Signature]
STRUCTURAL ENGINEER

MECHANICAL ENGINEER
ELECTRICAL ENGINEER
CIVIL ENGINEER

K I S T N E R , W R I G H T & W R I G H T
ARTHUR J. RENDON & LEWIS K. OSBORN, ASSOCIATES
ARCHITECTS AND ENGINEERS
LOS ANGELES, CALIFORNIA

STATE OF CALIFORNIA - DEPARTMENT OF PUBLIC WORKS
DIVISION OF ARCHITECTURE
21890 APPROVED JAN 30 1962
APPLICATION NO. *[Signature]*

EXTERIOR ELEVATIONS - UNITS "F" & "H"
NOGALES HIGH SCHOOL INC. II
LA PUENTE UNION HIGH SCHOOL DISTRICT
LA PUENTE, CALIFORNIA

DATE 1-6-62 SHEET NO.
DR. BY *[Signature]*
CHECKED BY *[Signature]*
JOB NO. 61-59-31 OF 138 SHEETS

A15

CONTRACTOR TO VERIFY ALL DIMENSIONS AT THE JOB