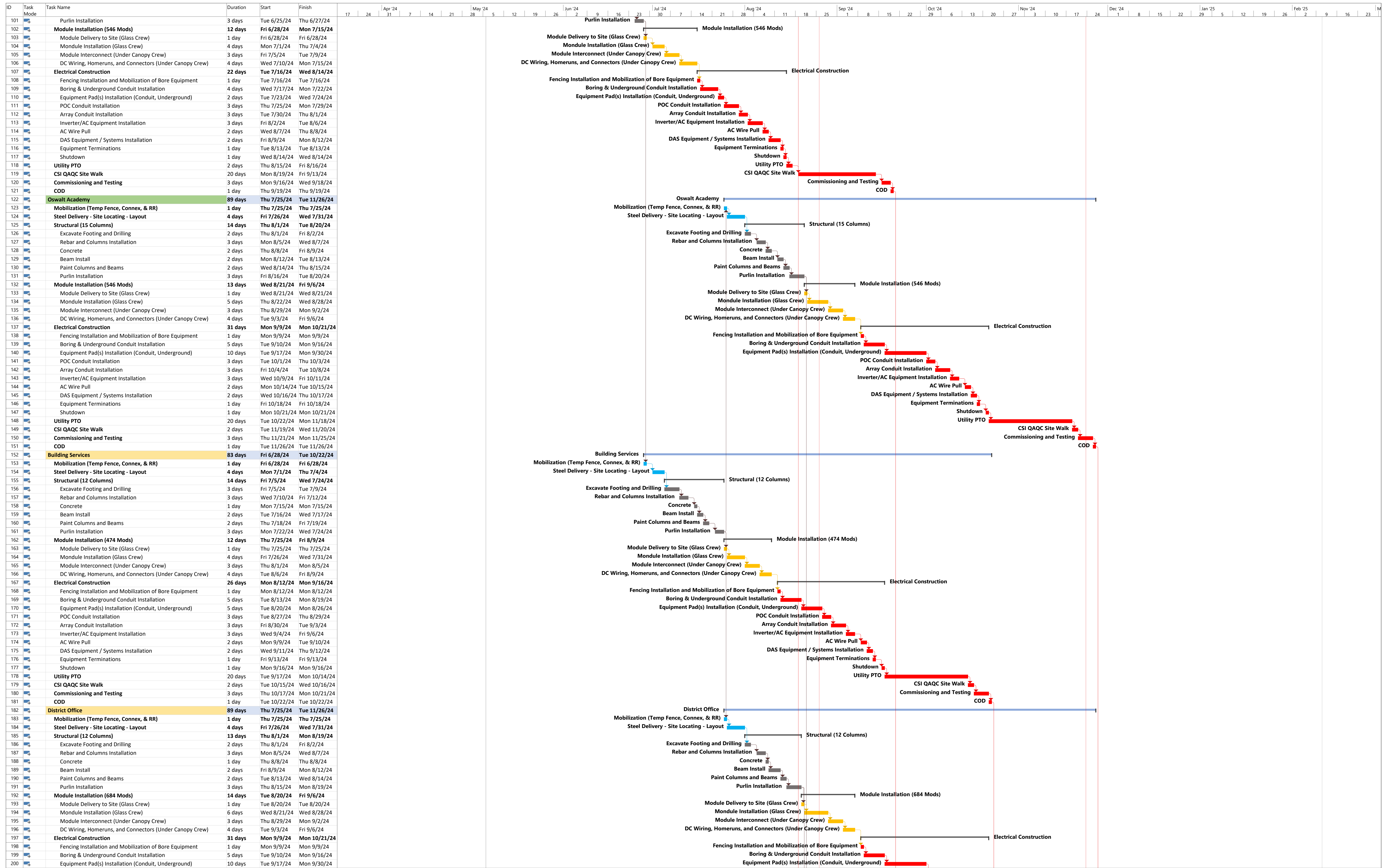


Project: Las Virgenes - Construc
 Date: Wed 2/14/24

Task Milestone Project Summary Inactive Milestone Manual Task Manual Summary Rollup Start-only External Tasks Deadline Manual Progress

Split Summary Inactive Task Inactive Summary Duration-only Manual Summary Finish-only External Milestone Progress



| | | | | | | | | | | |
|----------------------------------|-------|-----------|-----------------|--------------------|---------------|-----------------------|-------------|--------------------|----------|-----------------|
| Project: Las Virgenes - Construc | Task | Milestone | Project Summary | Inactive Milestone | Manual Task | Manual Summary Rollup | Start-only | External Tasks | Deadline | Manual Progress |
| Date: Wed 2/14/24 | Split | Summary | Inactive Task | Inactive Summary | Duration-only | Manual Summary | Finish-only | External Milestone | Progress | |

| ID | Task Mode | Task Name | Duration | Start | Finish |
|-----|-----------|---|----------------|--------------------|---------------------|
| 201 | | POC Conduit Installation | 3 days | Tue 10/1/24 | Thu 10/3/24 |
| 202 | | Array Conduit Installation | 3 days | Fri 10/4/24 | Tue 10/8/24 |
| 203 | | Inverter/AC Equipment Installation | 3 days | Wed 10/9/24 | Fri 10/11/24 |
| 204 | | AC Wire Pull | 2 days | Mon 10/14/24 | Tue 10/15/24 |
| 205 | | DAS Equipment / Systems Installation | 2 days | Wed 10/16/24 | Thu 10/17/24 |
| 206 | | Equipment Terminations | 1 day | Fri 10/18/24 | Fri 10/18/24 |
| 207 | | Shutdown | 1 day | Mon 10/21/24 | Mon 10/21/24 |
| 208 | | Utility PTO | 20 days | Tue 10/22/24 | Mon 11/18/24 |
| 209 | | CSI QAQC Site Walk | 2 days | Tue 11/19/24 | Wed 11/20/24 |
| 210 | | Commissioning and Testing | 3 days | Thu 11/21/24 | Mon 11/25/24 |
| 211 | | COD | 1 day | Tue 11/26/24 | Tue 11/26/24 |
| 212 | | Nogales HS | 94 days | Wed 8/21/24 | Mon 12/30/24 |
| 213 | | Mobilization (Temp Fence, Connex, & RR) | 1 day | Wed 8/21/24 | Wed 8/21/24 |
| 214 | | Steel Delivery - Site Locating - Layout | 4 days | Thu 8/22/24 | Tue 8/27/24 |
| 215 | | Structural (36 Columns) | 14 days | Wed 8/28/24 | Mon 9/16/24 |
| 216 | | Excavate Footing and Drilling | 3 days | Wed 8/28/24 | Fri 8/30/24 |
| 217 | | Rebar and Columns Installation | 3 days | Mon 9/2/24 | Wed 9/4/24 |
| 218 | | Concrete | 1 day | Thu 9/5/24 | Thu 9/5/24 |
| 219 | | Beam Install | 2 days | Fri 9/6/24 | Mon 9/9/24 |
| 220 | | Paint Columns and Beams | 2 days | Tue 9/10/24 | Wed 9/11/24 |
| 221 | | Purlin Installation | 3 days | Thu 9/12/24 | Mon 9/16/24 |
| 222 | | Module Installation (1881 Mods) | 27 days | Tue 9/17/24 | Wed 10/23/24 |
| 223 | | Module Delivery to Site (Glass Crew) | 2 days | Tue 9/17/24 | Wed 9/18/24 |
| 224 | | Module Installation (Glass Crew) | 15 days | Thu 9/19/24 | Wed 10/9/24 |
| 225 | | Module Interconnect (Under Canopy Crew) | 5 days | Thu 10/10/24 | Wed 10/16/24 |
| 226 | | DC Wiring, Homeruns, and Connectors (Under Canopy Crew) | 5 days | Thu 10/17/24 | Wed 10/23/24 |
| 227 | | Electrical Construction | 22 days | Thu 10/24/24 | Fri 11/22/24 |
| 228 | | Fencing Installation and Mobilization of Bore Equipment | 1 day | Thu 10/24/24 | Thu 10/24/24 |
| 229 | | Boring & Underground Conduit Installation | 4 days | Fri 10/25/24 | Wed 10/30/24 |
| 230 | | Equipment Pad(s) Installation (Conduit, Underground) | 2 days | Thu 10/31/24 | Fri 11/1/24 |
| 231 | | POC Conduit Installation | 3 days | Mon 11/4/24 | Wed 11/6/24 |
| 232 | | Array Conduit Installation | 3 days | Thu 11/7/24 | Mon 11/11/24 |
| 233 | | Inverter/AC Equipment Installation | 3 days | Tue 11/12/24 | Thu 11/14/24 |
| 234 | | AC Wire Pull | 2 days | Fri 11/15/24 | Mon 11/18/24 |
| 235 | | DAS Equipment / Systems Installation | 2 days | Tue 11/19/24 | Wed 11/20/24 |
| 236 | | Equipment Terminations | 1 day | Thu 11/21/24 | Thu 11/21/24 |
| 237 | | Shutdown | 1 day | Fri 11/22/24 | Fri 11/22/24 |
| 238 | | Utility PTO | 20 days | Mon 11/25/24 | Fri 12/20/24 |
| 239 | | CSI QAQC Site Walk | 2 days | Mon 12/23/24 | Tue 12/24/24 |
| 240 | | Commissioning and Testing | 3 days | Wed 12/25/24 | Fri 12/27/24 |
| 241 | | COD | 1 day | Mon 12/30/24 | Mon 12/30/24 |
| 242 | | Closeout Documents (Turnover) | 126 days | Mon 8/19/24 | Mon 2/10/25 |
| 243 | | Telesis | 30 days | Mon 8/26/24 | Fri 10/4/24 |
| 244 | | Giano | 30 days | Mon 8/19/24 | Fri 9/27/24 |
| 245 | | Rowland HS | 30 days | Mon 11/25/24 | Fri 1/3/25 |
| 246 | | Alvarado | 30 days | Fri 9/20/24 | Thu 10/31/24 |
| 247 | | Oswalt Academy | 30 days | Wed 11/27/24 | Tue 1/7/25 |
| 248 | | Building Services | 30 days | Wed 10/23/24 | Tue 12/3/24 |
| 249 | | District Office | 30 days | Wed 11/27/24 | Tue 1/7/25 |
| 250 | | Nogales HS | 30 days | Tue 12/31/24 | Mon 2/10/25 |

